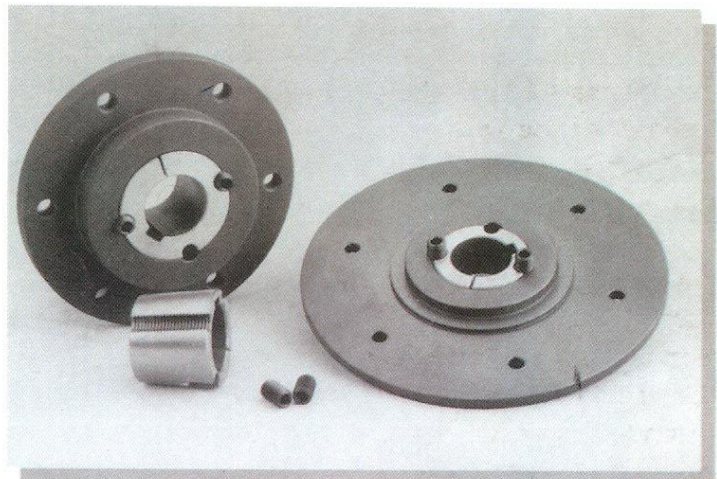
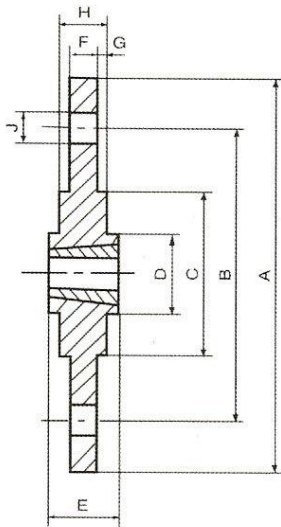




Taper **B**ore **Bolt-on-hubs**

Taper Bolt-on-Hub is one type of bolt-on-hubs that specially designed for bushes, its characteristics are simple structure, easy-on, easy-off, simultaneously usable on both sides and so on. It applies to vane wheels, fans and other parts which must be fixed closely with shafts.

Taper Bolt-on-Hub are made of high standard grey Cast Iron Gg25. Which have enough intensity. The surface is phosphated. Attractive and antirust. They are seriesly standarized produced and highly interchangeable, so that the stock costs can be lowered.



TAPER BOLT-ON-HUBS

specification	Bush No.	main dimensions								screw hole nxj
		A	B	Chg	D	E	F	G	H	
SM1200	1210	180	135	90	75	25	6.5	2.5	11.5	6XΦ7.5
SM1600	1615	200	150	110	85	38	7.5	2.5	12.5	6XΦ7.5
SM2000	2012	270	190	140	110	32	8.5	2.5	13.5	6XΦ9.5
SM2500	2517	340	240	170	125	45	9.5	2.5	14.5	6XΦ11.5
SM30-1	3020	430	300	220	160	51	13.5	2.5	18.5	6XΦ13.5
SM30-2	3020	485	340	250	160	51	13.5	2.5	18.5	6XΦ13.5
SM1210	1210	120	100	80	75	25	6.5	2.5	11.5	6XΦ7.5
SM1610	1610	130	110	90	85	25	7.5	2.5	12.5	6XΦ7.5
SM2012*	2012	145	125	115	110	32	8.5	2.5	13.5	6XΦ7.5
SM2517	2517	185	155	130	125	45	9.5	2.5	14.5	8XΦ11.5
SM3020	3020	220	190	160	160	51	13.5	2.5	18.5	8XΦ13.5