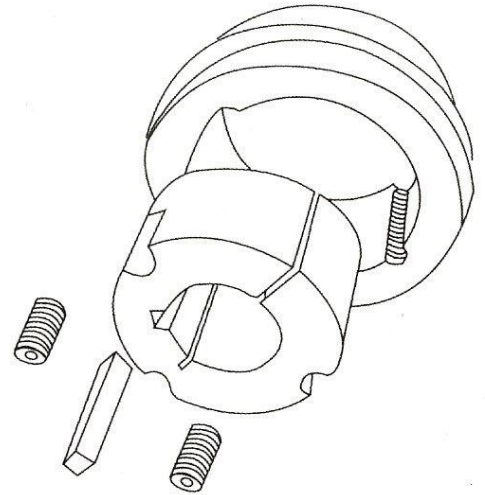


Taper Bore **WIWH weld-on hubs**

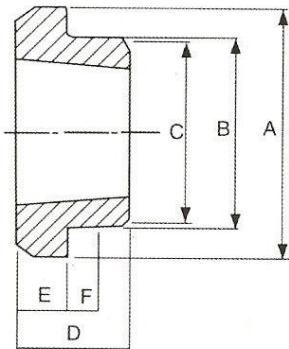
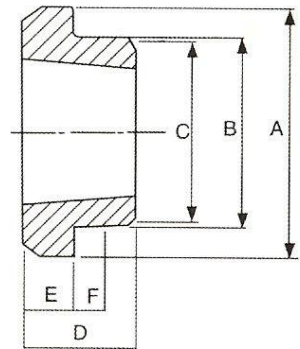
This system of Taper BORE weld-on Hubs adopt Europe Standard.

Taper Bore Weld-on Hubs are made of steel, drilled, tapped and taper bored to receive standard Taper Bushes. The extended flange provides a convenient means of welding hubs into fan rotors, steel pulleys, plate sprockets, impellers, agitators and many other devices, which must be firmly fastened entirely suitable for use where severe operating conditions are met. Tightening the screws contracts the bore of the bush, thereby locking it to the shaft with the equivalent of a press fit. This type of construction eliminates mounting difficulties, it also prevents loosening and wearing happened to the hub during operation.



W WELD-ON HUBS

Hub red	BUSH no	A	B	C	D	E	F
W12	1215	73.03	63.50	62.71	38.10	15.88	9.53
w 16	1615	82.55	73.03	72.24	38.10	15.88	9.53
w 20	2017	101.60	88.90	88.11	44.45	19.05	14.45
w 25	2517	127.00	111.13	110.34	44.45	19.05	14.45
w 30	3030	149.86	133.35	132.56	76.20	25.40	19.05
w35	3535	184.15	158.75	157.96	88.90	31.75	25.40
w40	4040	225.43	196.06	196.06	101.60	31.75	31.75
w45	4545	254.00	221.46	221.46	114.30	38.10	38.10



WH WELD-ON HUBS

Hub red	BUSH no	A	B	C	D	E	F
WH12	1210	70	65	64.5	25	9	10
WH16-1	1610	80	75	74.5	25	9	10
WH20	2012	95	90	89.5	32	12	12
WH25	2517	115	110	109.5	44	19	15
WH30-2	3020	145	140	139.5	50	20	15
WH35	3525	190	180	179.5	65	25	25
WH40	4040	200	190	189.5	101	32	30
WH45	4545	210	200	199.5	114	40	30
WH50	5050	230	220	219.5	127	40	45